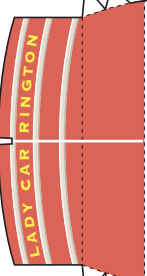
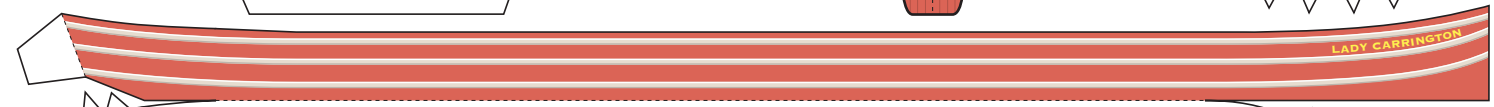
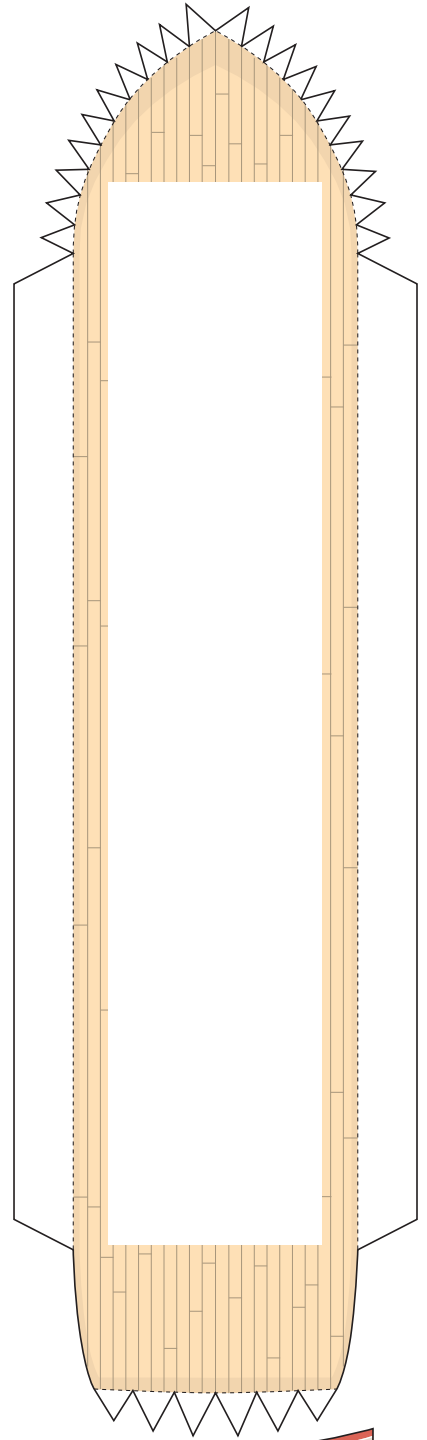
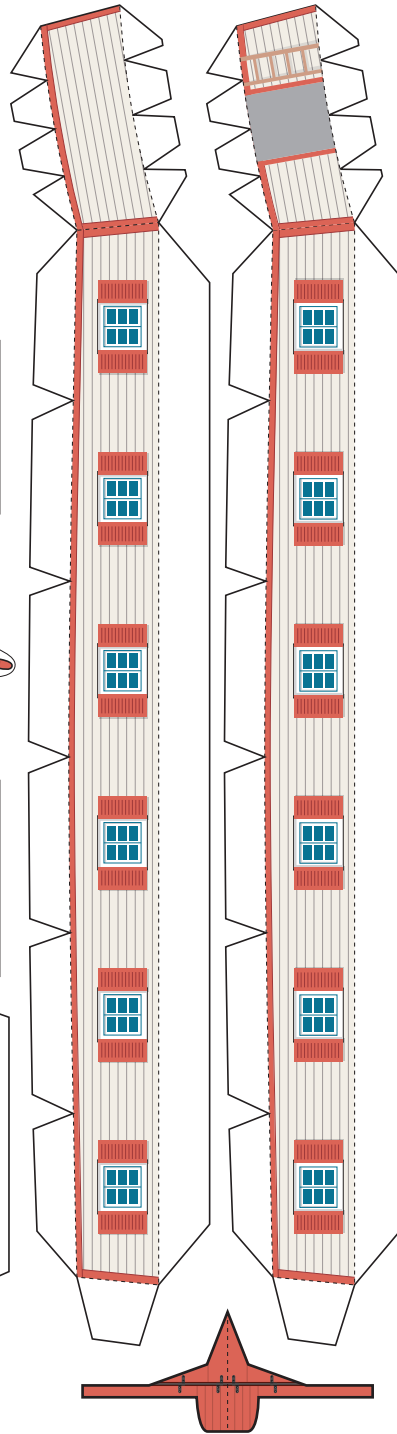
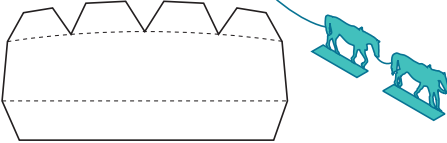
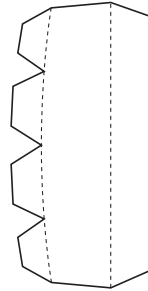
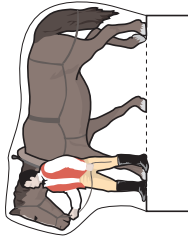
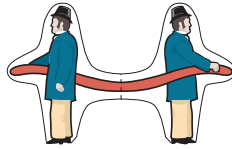
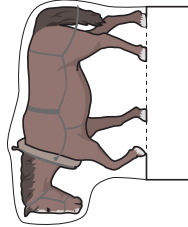
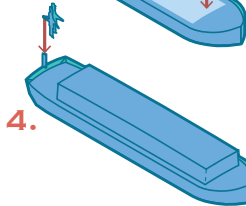
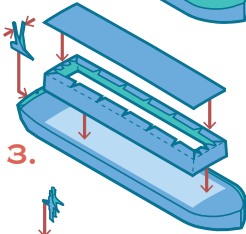
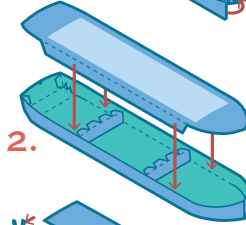
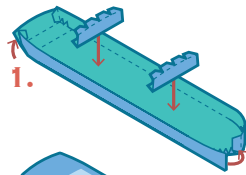
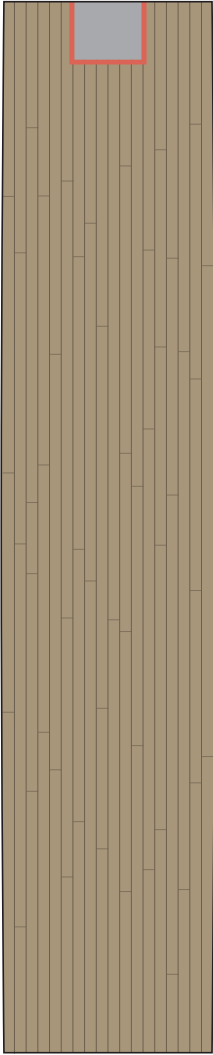


The 45-mile Blackstone Canal connected the inland town of Worcester, Massachusetts with the seacoast port of Providence, Rhode Island. Over the course of its 20-year history, the canal helped to spur commerce, industrial development, and immigration through the Blackstone River Valley.

Although the Blackstone Canal was primarily used for shipping, there was one packet or passenger boat, the Lady Carrington. She was named after Loriana Carrington, the wife of one of the principal investors of the canal, Edward Carrington.

Cut out the pieces with a scissors or hobby knife. Fold on the dotted lines and use white glue to assemble as shown in the diagrams:



**Blackstone
Heritage
Corridor, Inc.**

THE LADY CARRINGTON PACKET BOAT

BlackstoneHeritageCorridor.org

Model design by Matt Bergstrom – © Wurlington Press