

# American Canal Society Canal Index

CANAL	STATUS			ACS		
				HAER		
STATE/PROVINCE	ENLARGEMENTS	DATES IN USE	CANAL	LENGTH SLACKWATER	TOTAL	LIFT LOCKS No./SIZE
COUNTIES:		1				
LOCATION (Endpoints of Canal):		2				
TOPOGRAPHIC MAPS:		3				
		4				
HISTORICAL SIGNIFICANCE:						
PHYSICAL DESCRIPTION:						
NAMES & ADDRESSES OF GROUPS CONCERNED WITH CANAL'S PRESERVATION/RESTORATION:						
BIBLIOGRAPHICAL SUMMARY:						
UNPUBLISHED RECORDS, PHOTOS, DRAWINGS (CEHR, HAER, HABS. Local or Regional Historical Societies, Libraries, etc.):						
EXISTING OR RECOMMENDED LANDMARK STATUS (CEHR, National Register, ETC.):						
Investigation made by:					Date:	
Address:						

Use additional pages for added information

# Portage Lakes State Park

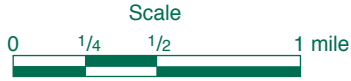
5031 Manchester Road  
Akron, Ohio 44319-3999

(330) 644-2220 - Park Office

Camp Office: 5550 Christman Road

## TRAILS

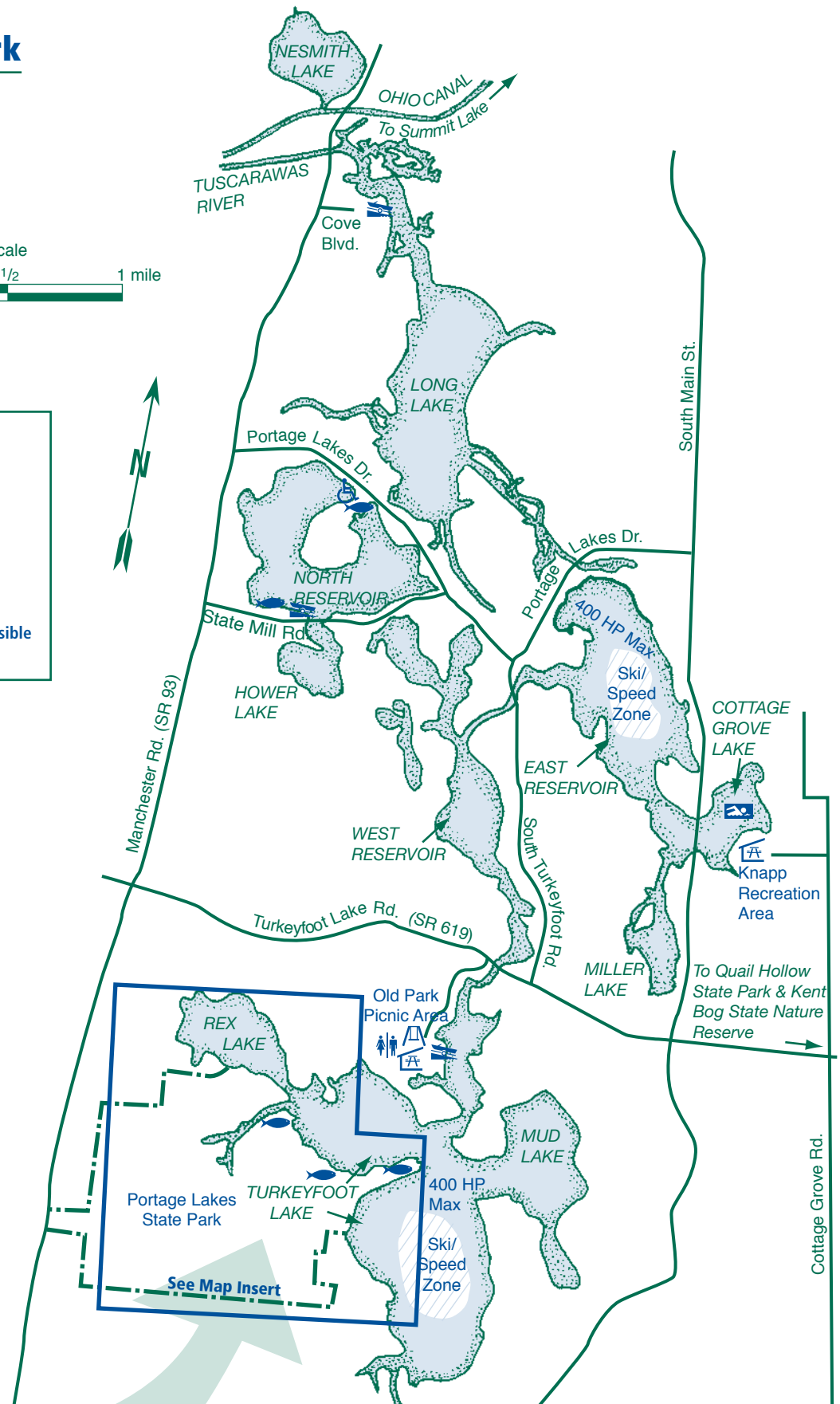
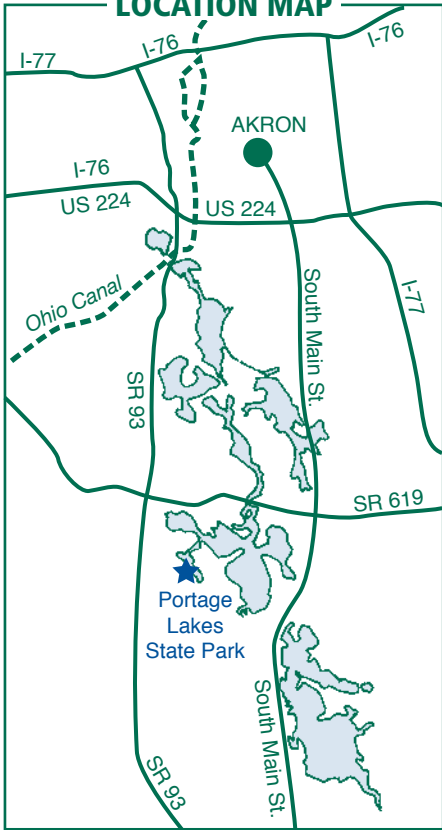
- 1 Planet Walk Trail (1 mi)
- 2 Shoreline Trail (5 mi)
- 3 Rabbit Hill Loop (1 mi)  
(self-guided nature trail)
- 4 Pheasant Run Loop (2 mi)



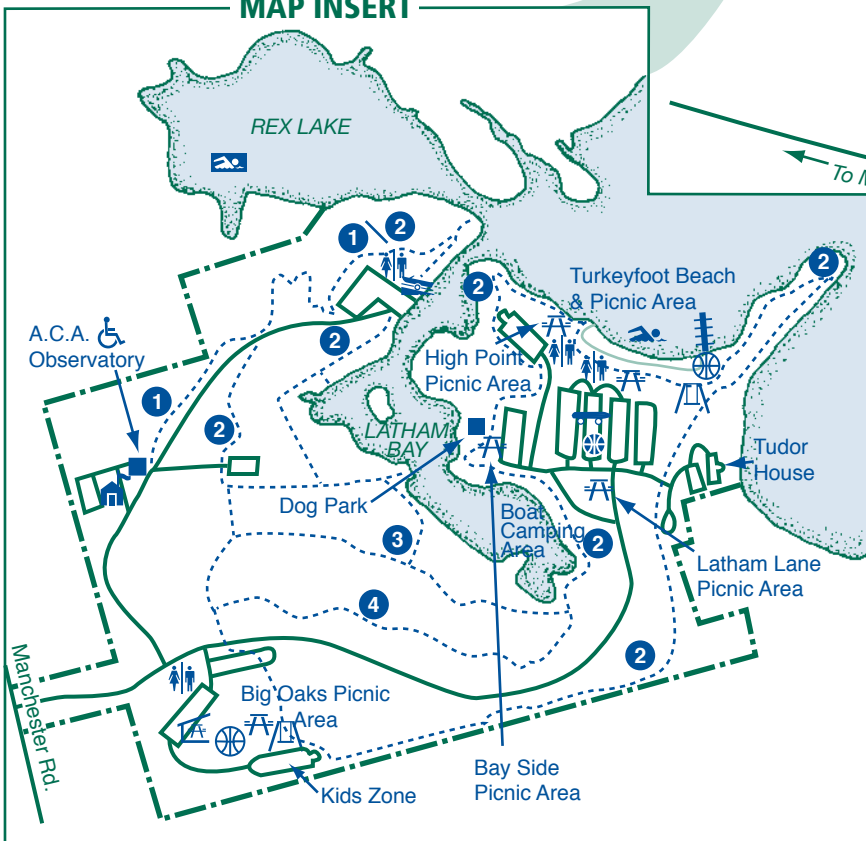
## LEGEND

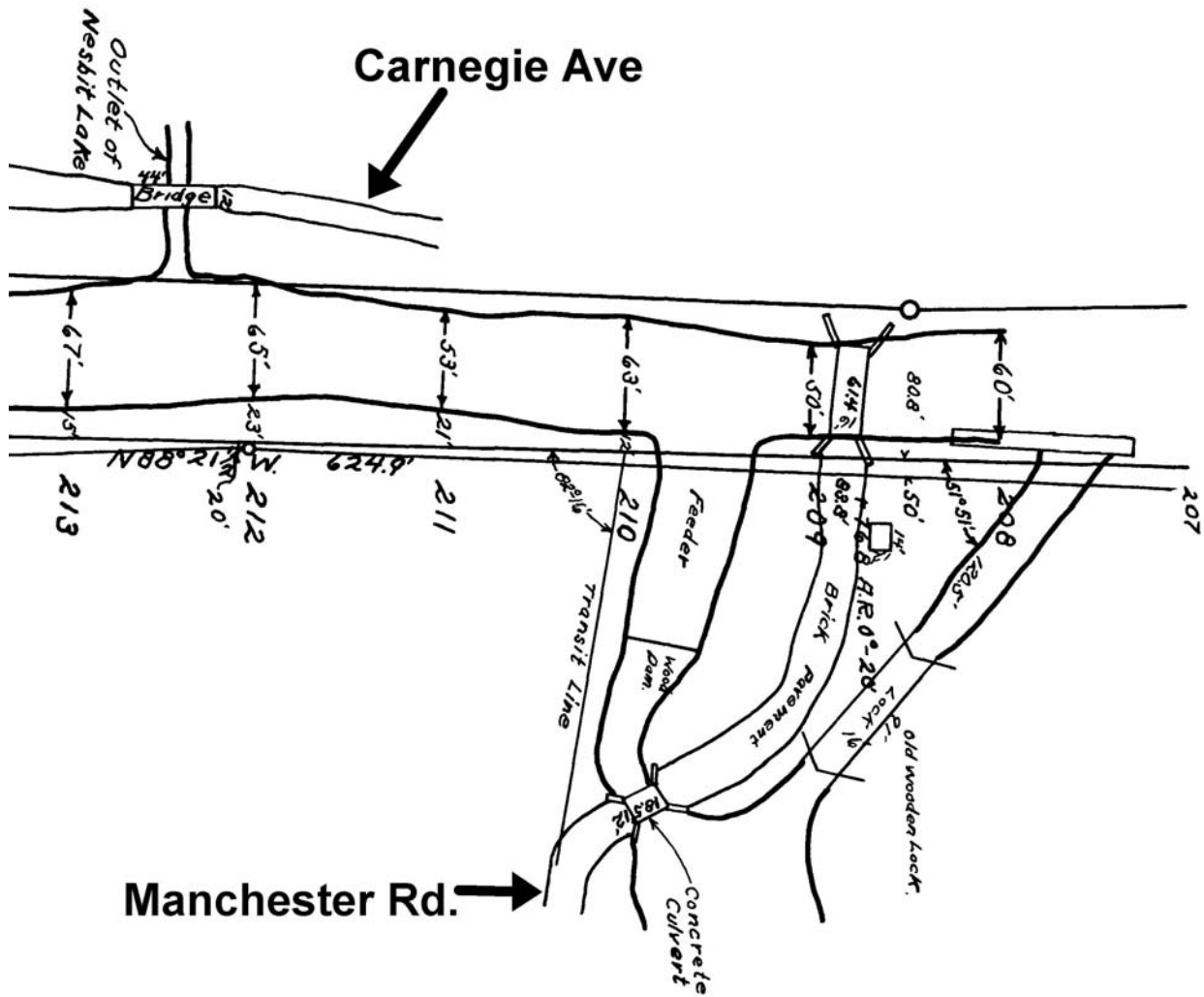
- |                |                       |
|----------------|-----------------------|
| Park Office    | Volleyball            |
| Picnic Area    | Basketball            |
| Picnic Shelter | Playground            |
| Latrine        | Skateboard Area       |
| Launch Ramp    | Beach                 |
| Fishing Access | Boat Swim Area        |
| Park Boundary  | Courtesy Docks        |
| Hiking Trail   | Wheelchair Accessible |
| Camping        |                       |

## LOCATION MAP



## MAP INSERT





This is a section of plat map 39 showing the lock between the canal and Long Lake at Manchester Road. The lock was 91' x 16' with a 3' lift to the lake.





**An aerial view of the site today. By canal, Akron is to the right and Barberton to the left.**